

Office Suites for Lease | 32135 Castle Court Evergreen, Colorado 80439



ALL photography, all pages | Copyright © 2018 by J. Barry Winter | All Rights Reserved

Individual Office Suites Now Available for Lease

LEASING & PROPERTY OVERVIEW

Lease Rates: Negotiable

Space available: 145 sf - 5,281 sf

Location: Exclusive Mountain Setting

Type: Professional Office Building

Benefit: Trail access to Elk Meadow

Parking: Ample Off-Street Parking

weststar

6795 E TENNESSEE AVE, STE 601, DENVER, CO 80224

720-941-9200 main | 720-941-9202 fax

Tim Hakes

720-880-2923 direct | 720-352-9457 cell

Stephanie Kamlet

720-880-2924 direct | 303-667-2029 cell

www.weststarcommercial.com



Information contained herein, while not guaranteed, is from sources believed reliable. Price, terms, and information subject to change
Copyright © 2018 Weststar Commercial. All Rights Reserved
32135CC-101018

Individual Office Suites Now Available for Lease

32135 Castle Court
Evergreen, Colorado 80439



ALL photography, all pages | Copyright © 2018 by J. Barry Winter | All Rights Reserved

Located on the outskirts of the popular town of Evergreen, Colorado is the **Castle Court Office Building**. Recently, a series of professional individual office suites have opened up for lease. The interior of this building holds an elegance in its design, while its contemporary exterior intermingles with a quiet and peaceful work environment with that of its rural mountain setting.

In general, the Evergreen area has a diversity of topography, vegetation, wildlife, trails, and natural features that are a part of Evergreen's character which is so much a part of the community's pride and identity, an integral part of what attracts, visitors, residents, tenants, and investors to the area.

This building in fact also offers something that few offices can boast: a small picnic area behind the building and access to hiking/biking trails into Elk Meadow. Its plentiful amount of on-site parking, as well as the scenic beauty on the drive to this location, and the option to negotiate an individual rate per office suite makes this an opportunity worth looking into.



PROPERTY HIGHLIGHTS

- Clean contemporary styling ◀
- Exclusive office suites in the mountains ◀
- Only 30 minutes from downtown Denver ◀
- Affluent area with specialized needs ◀
- Ample on-site parking ◀



Tim Hakes

720-880-2923 direct | 720-352-9457 cell

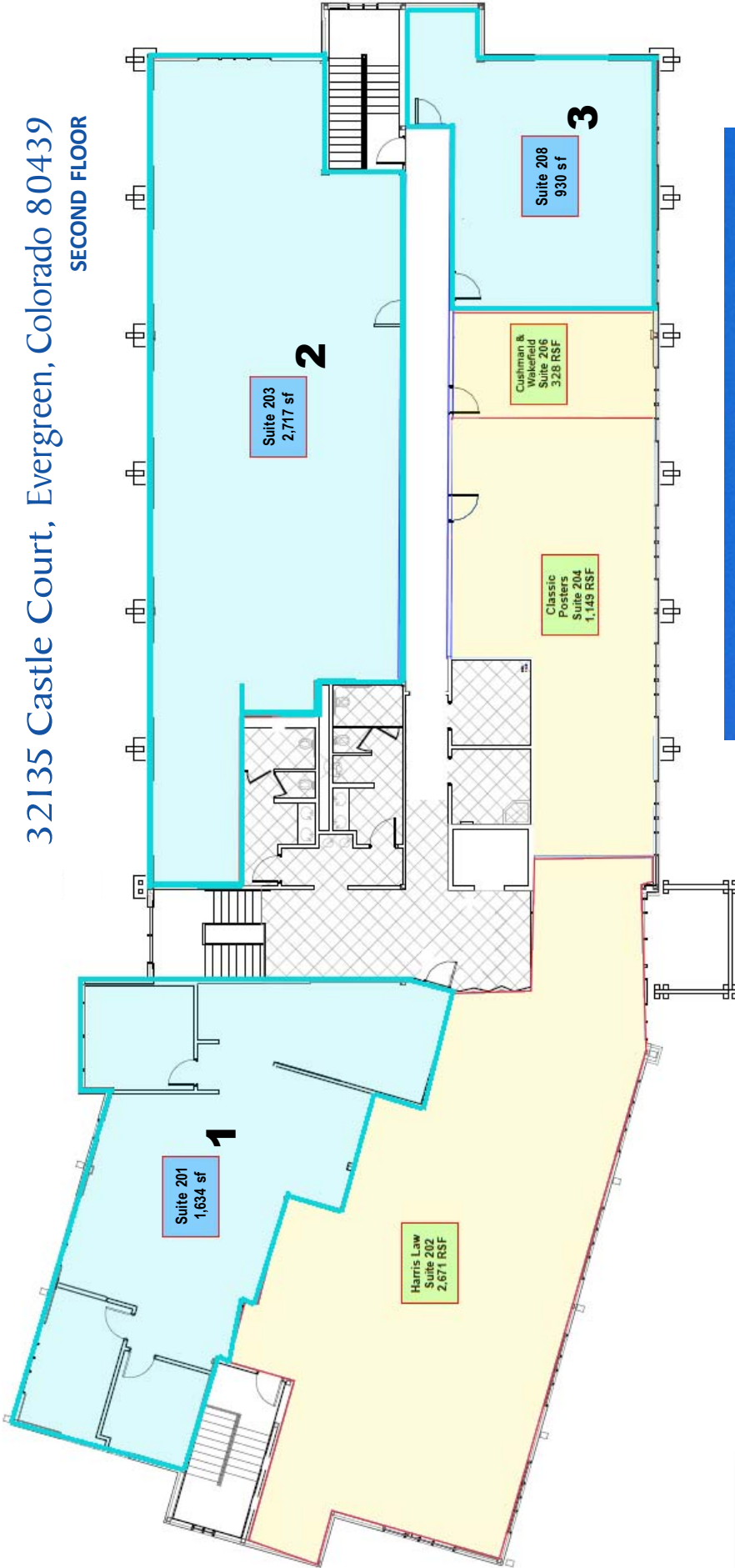
Stephanie Kamlet

720-880-2924 direct | 303-667-2029 cell



Copyright © 2018 Weststar Commercial 32135C-101018

32135 Castle Court, Evergreen, Colorado 80439
SECOND FLOOR

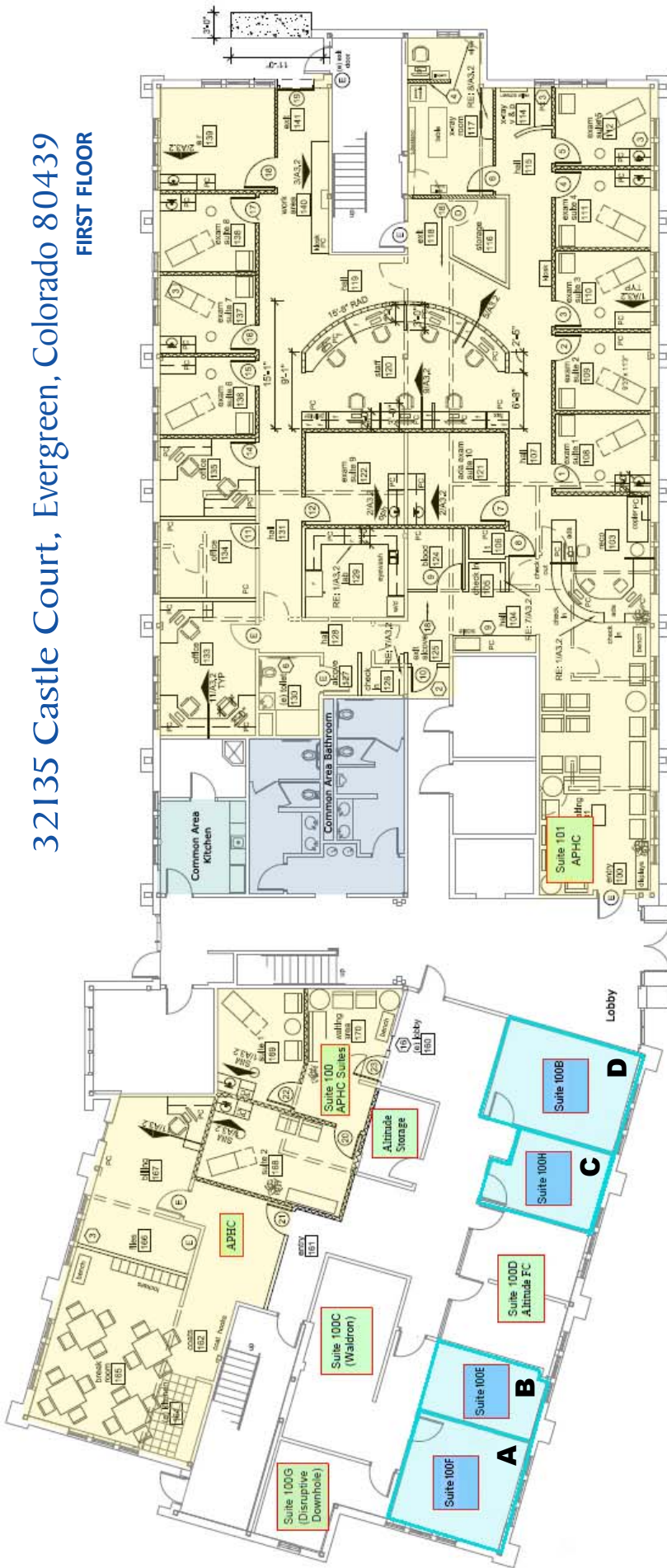


Available 2nd Floor

- Suite 201 | 1,634 sf **1**
- Suite 203 | 2,717 sf **2**
- Suite 208 | 930 sf **3**



32135 Castle Court, Evergreen, Colorado 80439
FIRST FLOOR



Available 1st Floor

- Suite 100F | 231 sf **A**
- Suite 100E | 145 sf **B**
- Suite 100H | 148 sf **C**
- Suite 100B | 231 sf **D**

Arapahoe Peak Health Center

